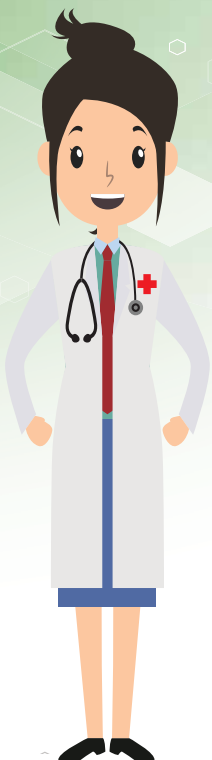


HEALTH EXPO ATHENS

11th Conference + Expo 8 - 9 February 2020

MEGARON ATHENS INTERNATIONAL CONFERENCE CENTRE



Discover the Greek Health Market



www.HealthExpo.gr

CHARAMI SA • 34, Alimou Ave. • 174 55 Alimos, Athens • Greece
T. +30 210 984 3274 • F. +30 211 800 5575 • info@PharmaManage.gr
www.PharmaManage.gr/en • www.MedicalManage.gr/en



HEALTH EXPO ATHENS

11th Conference + Expo

8 - 9 February 2020

REASONS TO PARTICIPATE

Health Expo Athens is the largest conference and exhibition in Greece dedicated to serving the health market.

It addresses pharmacists, physicians, their associates and health market executives and managers that actively seek to boost their business and build loyalty with their customers.

For two days, it will offer fresh ideas and solutions for the development and evolution of more than 100 and 7.000 expected exhibitors and visitors respectively.

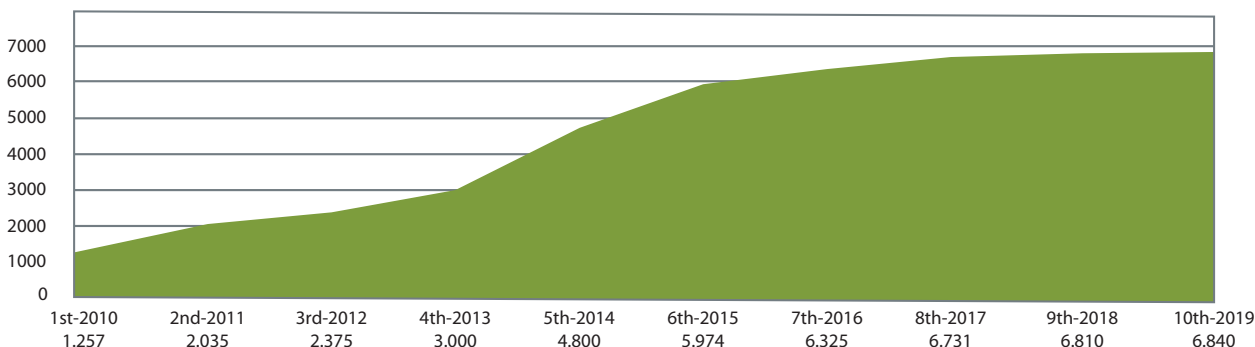
Whatever your stake in the health sector, **Health Expo Athens** will guarantee valuable face to face engagement with the most proactive decision makers the health profession has to offer.

It is the proven sourcing marketplace for owners, buyers, wholesalers and distributors.

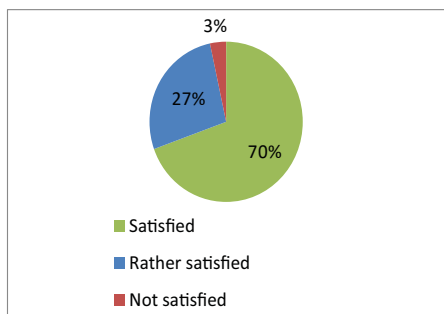
Health Expo Athens now presents the **Partnering Meeting Area**, where local and international companies congregate over the two days of the event and host meetings with potential partners.

HEALTH EXPO'S PROVEN SUCCESS

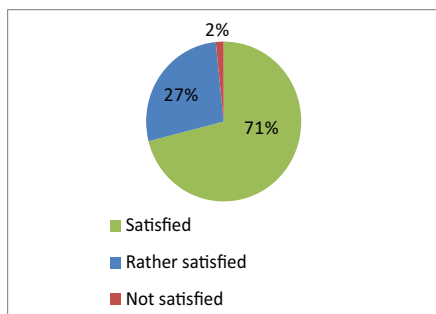
ATTENDANCE YoY



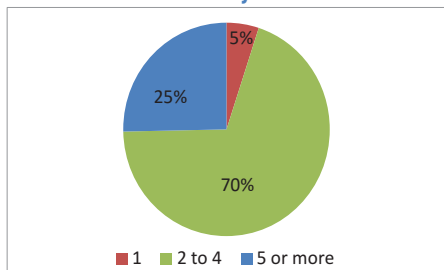
Exhibitor Satisfaction



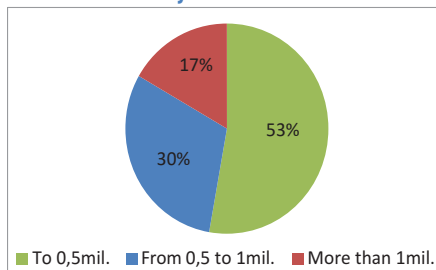
Visitor Satisfaction



Pharmacy Staff



Pharmacy Annual Turnover



9 FREE BENEFITS		SPONSOR Over 7.500€	SUPPORTER from 3.000€ up to 7.499€	PARTICIPANT Up to 2.999€
1	Free Admission and Full Attendance (Online Registration Required)	✓	✓	✓
2	Single-phase electric power supply up to 100W/3m ²	✓	✓	✓
3	1 month rotating, run-of-site banner at www.PharmaManage.gr or www.MedicalManage.gr or www.y-o.gr	160 x 600	208 x 420	208 x 208
4	Logo on printed and electronic communication	✓	✓	✓
5	Logo on all press releases, conference material, conference halls and social media	✓	—	—
6	300 x 300 company banner and profile permanently posted on our sites	✓	✓	✓
7	Barcode reader to scan your visitor badges + provision of scanned visitor data	✓	✓	✓
8	One-day Parking Permits	12	8	4
9	Standard Health Expo Partnering: Access to Match Making Platform to arrange for 1:1 25' scheduled targeted meetings. Company Profile Promotion (See details below ↓)	✓	✓	✓

Health Expo Partnering - Match Making Platform:

Meet with clients, partners, owners, manufacturers, wholesalers, distributors, importers or exporters from the Greek and international markets.

Capitalize on our Partnering and Match Making package and organize scheduled targeted 1:1 25' business meetings for you and your team in the Partnering Meeting Area, during the two days of the event.

Combine the networking activities with your Company Presentation in the Premium package.

Discover the right opportunities for your business!

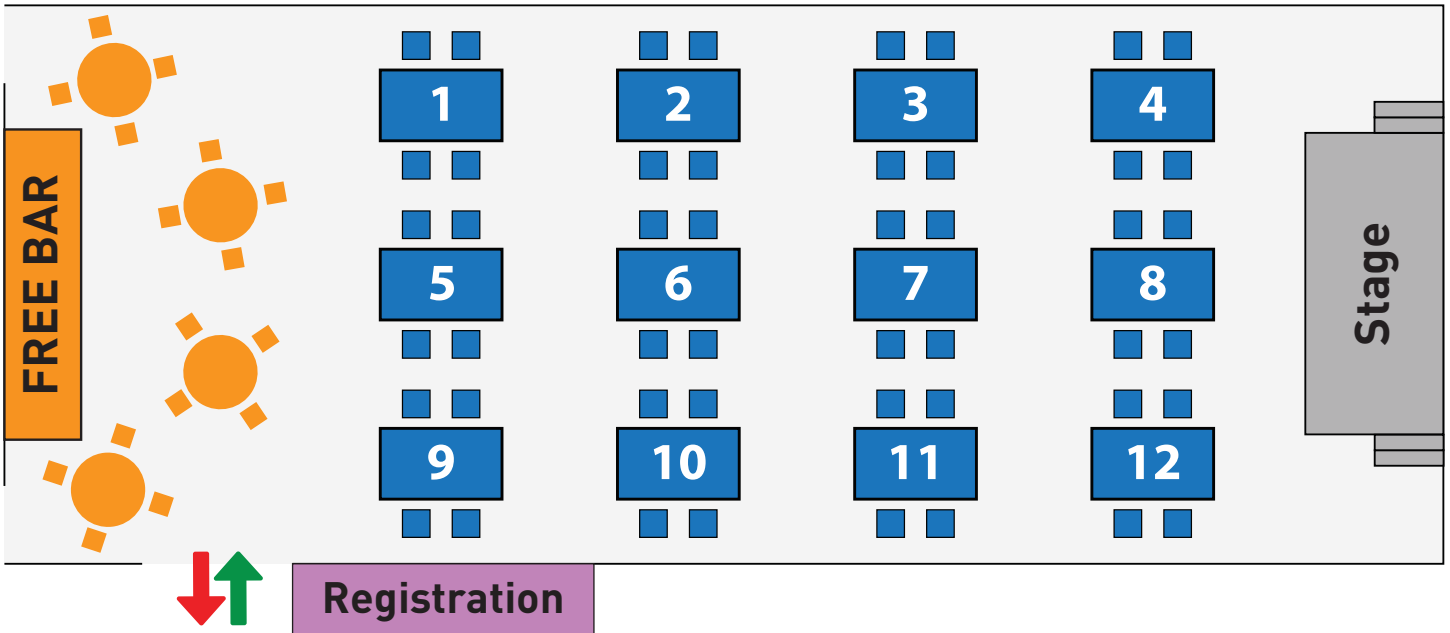
Select the right Partnering package and make the most out of your visit to Health Expo Athens:

PACKAGES - DESCRIPTIONS	BASIC Free	STANDARD 390 €	PREMIUM 690 €
1 Access to Match Making platform to arrange for 1:1 25' scheduled targeted meetings in the Partnering Meeting Area with free Coffee Bar	✓	✓	✓

PACKAGES - DESCRIPTIONS		BASIC Free	STANDARD 390 €	PREMIUM 690 €
2	300 x 300 company banner and profile permanently posted on our web sites	—	✓	✓
3	Communication of Company Profile to 5.000+ business executives	—	✓	✓
4	30 Minute Company Presentation slot See page 8 for description	—	—	✓
5	Announcement of Company Presentation to 5.000+ business executives	—	—	✓
6	Barcode reader to scan your visitor badges + provision of scanned visitor data	—	—	✓

PARTNERING MEETING AREA

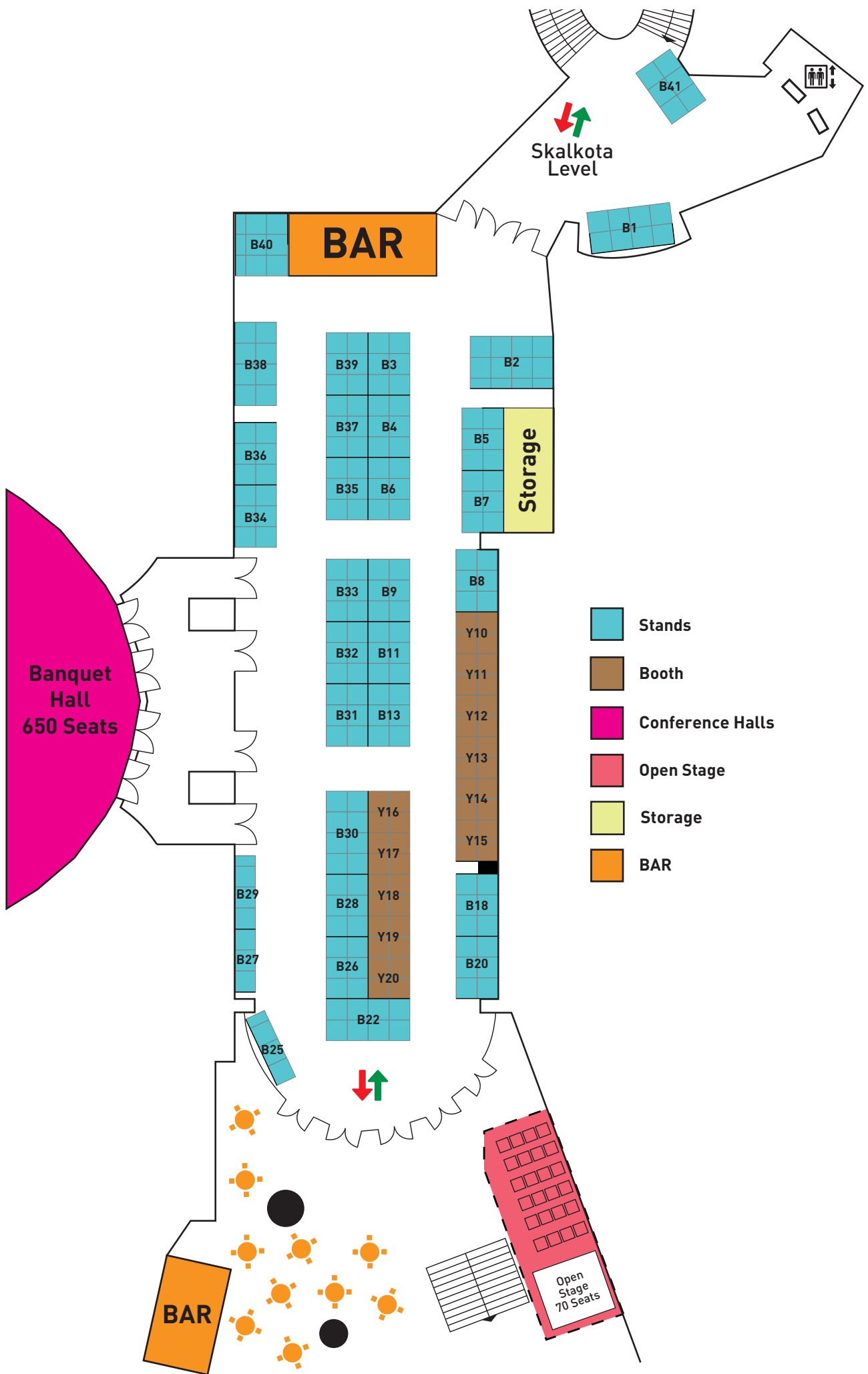
12 Desks for 1:1 25' Scheduled Targeted Meetings



LEVEL SKALKOTAS



LEVEL BANQUET (-1)



Stands and Booths

Level	Stand	Dimensions	m ²	Facade	Price €	
SKALKOTA LEVEL	1	3 x 2	6	2	3.100	
	2	4 x 2	8	1	3.500	
	3	3 x 2,5	7,5	2	3.300	
	4	3 x 2,5	7,5	2	3.300	
	5	3 x 2	6	2	2.800	
	10	3 x 2	6	2	3.700	
	11	3 x 3	9	2	4.400	
	12	3 x 3	9	1	3.900	
	13	3 x 3	9	1	3.900	
	14	3 x 3	9	1	3.900	
	15	3 x 3	9	1	3.900	
	16	3 x 3	9	1	3.900	
	17	3 x 3	9	2	4.800	
	18	3 x 3	9	1	4.400	
	19	3 x 3	9	1	4.400	
	20	3 x 3	9	1	4.400	
	21	3 x 2	6	2	4.400	
	22	3 x 3	9	1	4.400	
	23	3 x 2	6	1	3.800	
	24	3 x 2	6	2	4.400	
	25	3 x 2	6	1	3.800	
	26	3 x 2	6	2	4.400	
	27	3 x 2	6	1	3.800	
	28	3 x 2	6	2	4.400	
	29	3 x 2	6	1	3.800	
	30	3 x 2	6	2	4.400	
	31	3 x 2	6	2	4.400	
	32	3 x 2	6	2	4.400	
	33	3 x 2	6	1	3.800	
	34	3 x 2	6	2	4.400	
	35	2,5 x 1,5	3,75	2	2.900	
	36	3 x 2	6	2	4.400	
	37	3 x 2	6	3	5.000	
	38	3 x 2	6	2	4.400	
	39	3 x 2	6	2	4.400	
	40	3 x 2	6	2	4.400	
	41	3 x 2	6	2	4.400	
	42	3 x 2	6	2	4.400	
	43	3 x 3	9	1	4.400	
	44	3 x 3	9	1	4.400	
	45	3 x 3	9	1	4.400	
	46	3 x 3	9	1	4.400	
	47	3 x 2	6	2	4.400	
	48	3 x 3	9	1	4.400	
	50	4 x 3	12	2	6.200	
	51	3 x 2	6	3	4.800	
	53	4 x 1,5	6	3	4.800	
	54	3 x 3	9	2	5.000	
	55	3 x 3	9	1	4.400	
		Booth	Dimensions	m²	Facade	Price €
		Y1	2 x 2	4	1	1.700
		Y2	2 x 2	4	1	1.700
		Y3	2 x 2	4	1	1.700
		Y4	2 x 2	4	1	1.700

Space Only

With Construction

Level	Stand	Dimensions	m ²	Facade	Price €	
BANQUET LEVEL (-1)	B1	4 x 2	8	1	3.100	
	B2	4 x 2,5	10	2	4.800	
	B3	3 x 2	6	2	3.700	
	B4	3 x 2	6	1	2.600	
	B5	3 x 2	6	1	2.700	
	B6	3 x 2	6	2	2.800	
	B7	3 x 2	6	1	2.600	
	B8	3 x 2	6	1	2.700	
	B9	3 x 2	6	2	2.800	
	B11	3 x 2	6	1	2.600	
	B13	3 x 2	6	2	2.800	
	B18	3 x 2	6	1	2.000	
	B20	3 x 2	6	2	2.500	
	B22	4 x 2	8	3	3.500	
	B25	3,5 x 1	3,5	2	2.300	
	B26	3 x 2	6	1	2.600	
	B27	3 x 1	3	1	2.000	
	B28	3 x 2	6	1	2.600	
	B29	3,5 x 1	3,5	1	2.400	
	B30	4 x 2	8	2	3.900	
	B31	3 x 2	6	2	3.500	
	B32	3 x 2	6	1	3.100	
	B33	3 x 2	6	2	3.500	
	B34	3 x 2	6	2	2.800	
	B35	3 x 2	6	2	3.100	
	B36	3 x 2	6	1	2.600	
	B37	3 x 2	6	1	2.600	
	B38	4 x 2	8	2	3.500	
	B39	3 x 2	6	2	3.500	
	B40	2,5 x 3	7,5	1	2.800	
	B41	3 x 2	6	2	2.800	
		Booth	Dimensions	m²	Facade	Price €
		Y10	2 x 2	4	1	1.500
		Y11	2 x 2	4	1	1.500
		Y12	2 x 2	4	1	1.500
		Y13	2 x 2	4	1	1.500
		Y14	2 x 2	4	1	1.500
		Y15	2 x 2	4	1	1.500
		Y16	2 x 2	4	2	1.700
		Y17	2 x 2	4	1	1.500
		Y18	2 x 2	4	1	1.500
	Y19	2 x 2	4	1	1.500	
	Y20	2 x 2	4	1	1.500	

Space Only

With Construction

WORKSHOPS: 1/2 DAY ROOM RENTAL

Saturday 8/2: 08:30 - 14:30 or 15:00 - 19:00 | Sunday 9/2: 08:30 - 13:30 or 14:00 - 19:00

Hall	Seats	€
MC 3.2	60	2.100
MC 3.3	40	1.900
MC 3.4	60	2.100
MC 3.5	20	1.400

COMPANY PRESENTATIONS: 30 minutes

MC 3.5	20	€
		400

All Rooms are fully equipped with audiovisual media and laptop • Electronic Registration outside each Room + 1 barcode reader, 1 table and 2 chairs • Provision for leaflet distribution and advertising material placement • Inclusion in Conference Program • Translation services are not available in above Rooms • Above prices apply to Exhibitors only.



HEALTH EXPO ATHENS

11th Conference + Expo

8 - 9 February 2020

RENTAL of STAND (Optional)



- 2,5m height aluminum frames with PVC filling panels in gray color.
- Aluminum fascia board with company signage 1,20 x 0,25 m.
- Blue floor carpet
- Round table with glass top
- 3 chairs
- 100W Spotlight per 3m²
- 500W Socket

Price: €85/m²

RENTAL of BOOTH with CONSTRUCTION



- 2 x 2 = 4m², 2,5 m height with only a white wooden backwall structure.
- Green floor carpet
- Round table with glass top
- 2 chairs
- 100W Spotlight per 2m²
- 500W Socket

Construction + Equipment Included in Booth Prices
See pages 5 and 6



EQUIPMENT RENTAL (Includes Installation)

Equipment	Description	Dimensions	Price €
	TV	43"	130
	TV	50"	150
	TV Floor Stand	-	35
	Round Tables: Glass, White or Wooden (Acacia) Round Tall Glass Table	60 cm	60
	Chair: White or Black		25
	Round Tall Stool or White with Back		30
	White Bench	120x70x72cm	60
	Glass Showcase	43x37x163cm	70
	Cube Printed Cube	50x50x90cm	50 100
	Reception Printed in Front	100x100x50cm	100
	HQI Light LED Light		35/Light
	Slat Panel with 30 Hooks		100
	Carpet: White - Black - Grey Green - Red - Blue		7/m ²



HEALTH EXPO ATHENS

11th Conference + Expo
Athens, 8 & 9 February 2020

08:30 - 19:30

www.HealthExpo.gr



CHARAMI SA

PUBLICATIONS & COMMUNICATIONS SERVICES
Empowering Health Communications

34, Alimou Ave. • 174 55 Alimos, Athens • Greece
T. +30 210 984 3274 • F. +30 211 800 5575 • info@PharmaManage.gr
www.PharmaManage.gr/en • www.MedicalManage.gr/en

For more information contact:

Christina Sikali • T. +30 210 984 3274 • c.sikali@PharmaManage.gr
Antonis Sakaloglou • T. +30 210 984 3274 • a.sakaloglou@PharmaManage.gr